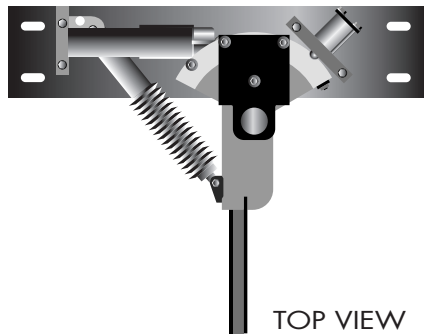
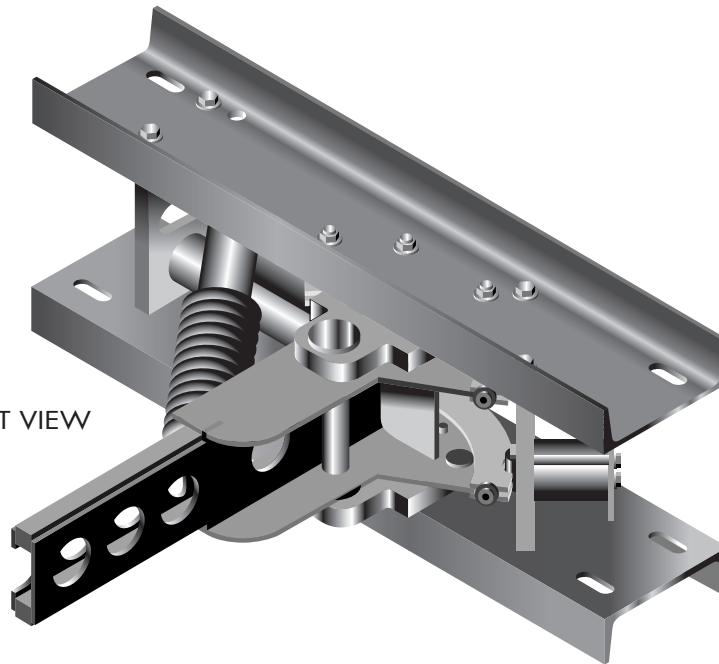


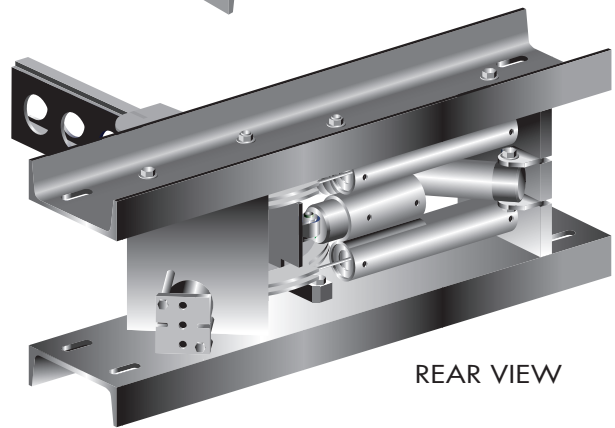


Gate-Saver
NEG385102GS

FRONT VIEW



TOP VIEW



REAR VIEW

Gate-Saver is the most versatile gate arm saver in the railroad industry. It allows gate arms, hit by a moving vehicle, to rotate out of the way and return to the original position without damaging the arm.

The all-new Gate-Saver can handle gate lengths of 10 feet to over 42 feet long in all types of applications, eliminating the need to carry more than one type of Gate-Saver in your inventory.

A few of the benefits of this "Gate-Saver" breakaway is that it works with gate arms up to 42 feet, also it will disengage, so as to allow the maintainer to fix or install a new gate arm off to the side of the road but still be installed and affixed to the counterweight arms. This is a real safety factor for the maintainer. Another point of interest, is that our "Gate-Saver" has a counter attached to it so it will actually

give you feed back as to the number of times a vehicle hits the gate arm. And last but not least, the "Gate-Saver works on exit and entrance applications.

Let us put one at your busiest intersection/crossing and show you the immediate cost savings Gate-Saver can provide.

Order item number:
NEG385102GS

