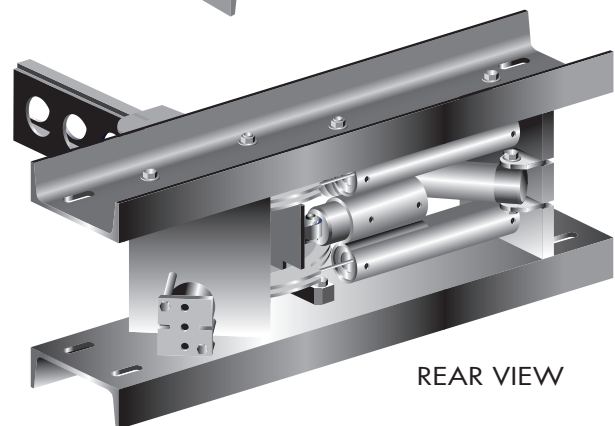
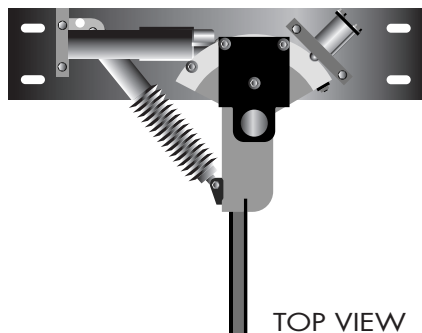
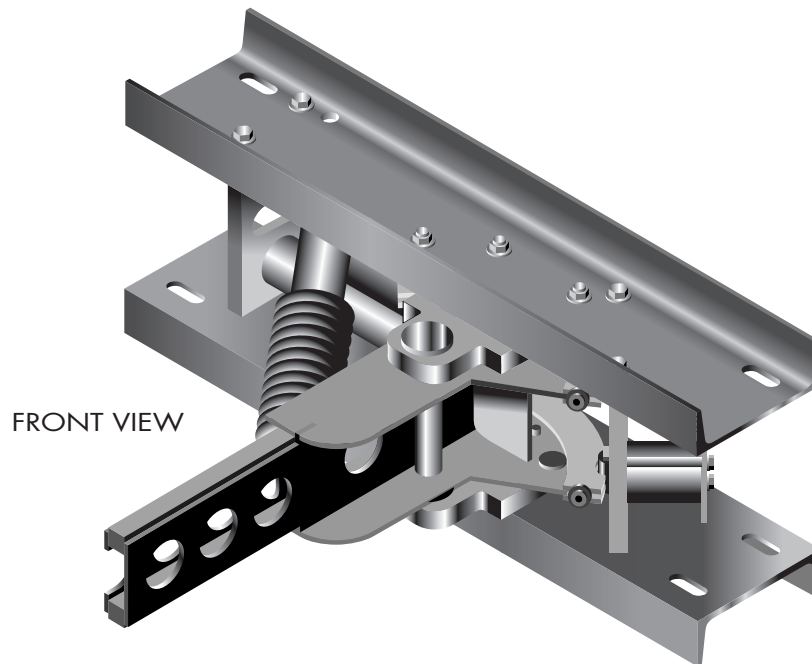




Gate-Saver NEG385102GS



Gate-Saver is the most versatile gate arm saver in the railroad industry. It allows gate arms, hit by a moving vehicle, to rotate out of the way and return to the original position without damaging the arm.

The all-new Gate-Saver can handle gate lengths of 10 feet to over 42 feet long in all types of applications, eliminating the need to carry more than one type of Gate-Saver in your inventory.

A few of the benefits of this "Gate-Saver" breakaway is that it works with gate arms up to 42 feet, also it will disengage, so as to allow the maintainer to fix or install a new gate arm off to the side of the road but still be installed and affixed to the counterweight arms. This is a real safety factor for the maintainer. Another point of interest, is that our "Gate-Saver" has a counter attached to it so it will actually

give you feed back as to the number of times a vehicle hits the gate arm. And last but not least, the "Gate-Saver works on exit and entrance applications.

Let us put one at your busiest intersection/crossing and show you the immediate cost savings Gate-Saver can provide.

Order item number:
NEG385102GS



LIMITED WARRANTY

The Gatesaver is warranted by the manufacturer against defects in material or workmanship for a period of three (3) years from the date of purchase. This warranty is limited to replacement or repair of defective material or parts. Repair or replacement of parts shall take place at manufacturer's facility in Pooler, GA. Purchaser shall incur all costs and responsibility for delivery of the product to manufacturer's facility in Pooler, GA for repair. Purchaser acknowledges and agrees that it has fully examined the product or sample or model of the product as it desires, or has been offered the opportunity to fully examine the product or sample or model of the product as it desires and has waived its right to the examination of the product.

NO OTHER WARRANTIES, EXPRESS OR IMPLIED, INCLUDING ANY IMPLIED WARRANTY OF FITNESS OR MERCHANTABILITY ARE MADE BEYOND THE LIMITED WARRANTY SET FORTH ABOVE.

National Electric Gate Company
PO Box 706
Pine Barron Road
Pooler, GA 31322
912-748-5090

GATE SAVER OPERATION

INSTALL THE GATESAVER WITH THE TRACK ARROW DECAL POINTING TO THE TRACK TO CORRECTLY ORIENT THE PRIMARY OPERATION OF THE GATESAVER.

PRIMARY DIRECTION:

THE GATESAVER WILL SWING UP TO 45 DEGREES IN THE PRIMARY DIRECTION WITH A SLOW RETURN TO CENTER. THE SHEAR PIN HAS NO EFFECT WHEN THE GATESAVER OPERATES IN THE PRIMARY DIRECTION.

SECONDARY DIRECTION:

THE GATESAVER WILL SWING TO APPROXIMATELY 15 DEGREES IN THE SECONDARY DIRECTION, WITH NO SPEED CONTROL ON RETURN TO CENTER. THE SHEAR PIN WILL BE DESTROYED WHEN THE GATESAVER IS OPERATED IN THE SECONDARY DIRECTION.

THE OPTIONAL COUNTER WILL DISPLAY THE NUMBER OF CYCLES IN THE PRIMARY DIRECTION.

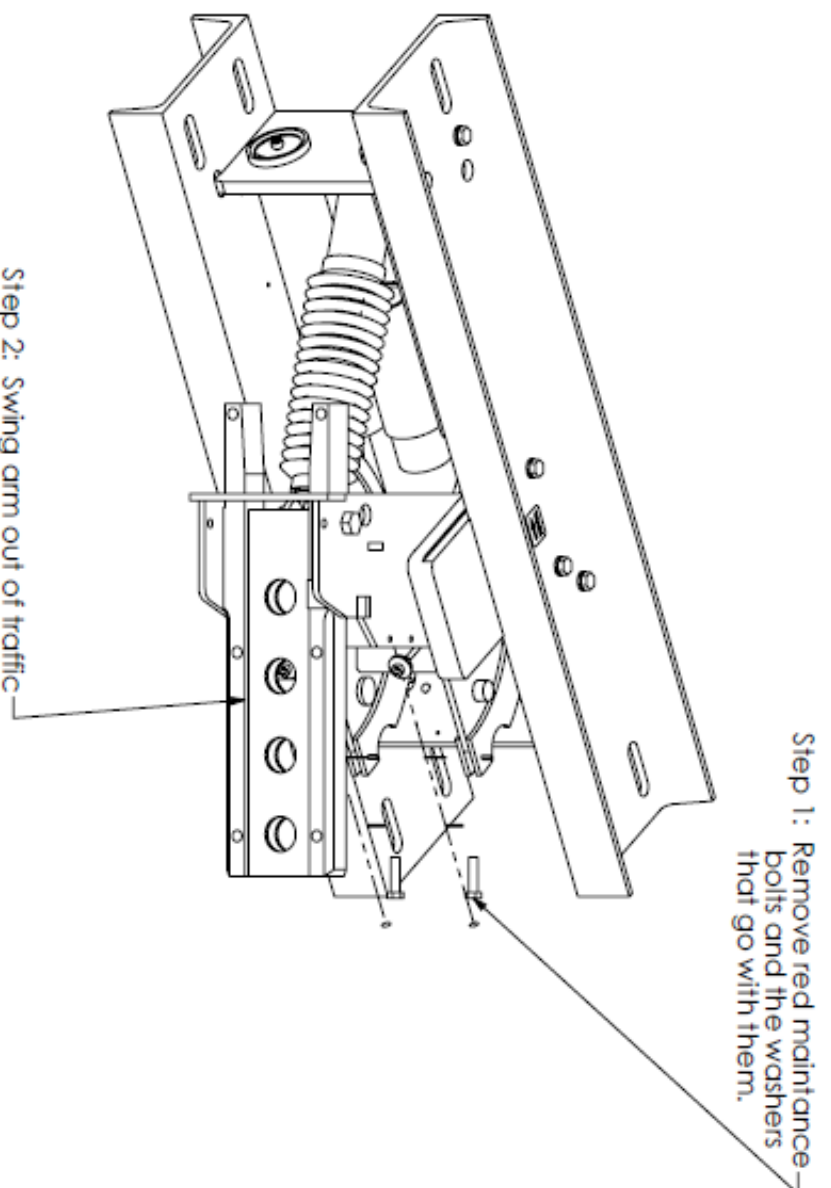
NOTE: EVEN AFTER LOSS OF THE SHEAR PIN THE GATESAVER WILL OPERATE IN EITHER DIRECTION.

INSTRUCTIONS

SWING ARM

Tools Needed:
9/16" Wrench (2x)

1. Remove the **Two Red Arm Bar Hex Head Bolts**.
2. Swing arm out of traffic. The arm will swing 90 degrees in the secondary direction with no restriction or spring force
3. Re-install in reverse order.



INSTRUCTIONS

SHEAR PIN

1. REMOVE 1015-0005-002 HEX BOLT 1/4"-20 x 3/4"
2. AFTER BOLT IS REMOVED PULL SHEAR-PIN & SHEAR CLAMP OFF
3. REMOVE CLAMP FROM NOTCH CUT INTO THE SHEAR-PIN
4. TO RE-INSTALL SHEAR-PIN REVERSE STEPS 1-3

