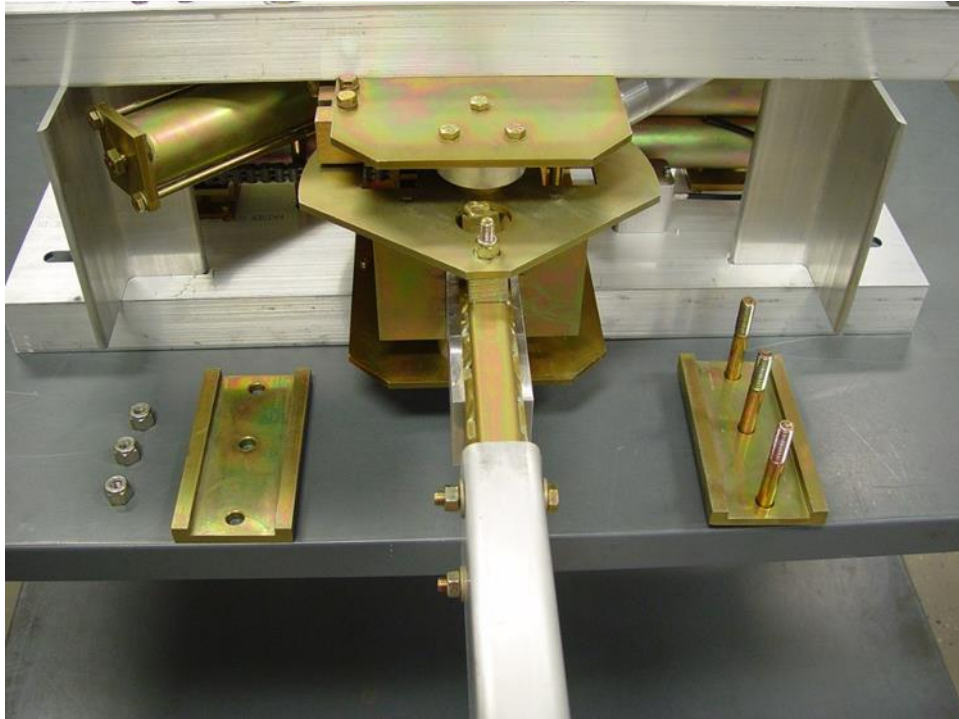


THE UNIT INCLUDES LONG MOUNTING BOLTS THAT PASS THRU THE MECH ARM WITH NUTS ON THE OUTSIDE OF THE GATE SAVER. THIS ELIMINATES REACHING INTO TIGHT SPACES TO HOLD THE NUTS. THERE ARE EXTRA WASHERS PROVIDED AS NOT ALL MECH ARMS ARE THE SAME DIMENSION AND MAY NEED SHIMS TO PROVIDE A TIGHT FIT.



FOR SERVICE THE ARM CAN BE SWUNG OUT OF THE WAY. REMOVE THE 3 BOLTS HOLDING THE ARM SIDE PLATES. LOCK THE MECH IN THE DOWN POSITION. AS SHOWN ABOVE THE ARM IS AT CENTER, BUT THE ARM WILL SWING EITHER DIRECTION 90 DEGREES.

THE UNITS INCLUDE A DETENT SYSTEM THAT PROVIDES FOR RESISTANCE TO BREAKAWAY BY WIND. THE BREAKAWAY IS ADJUSTABLE.

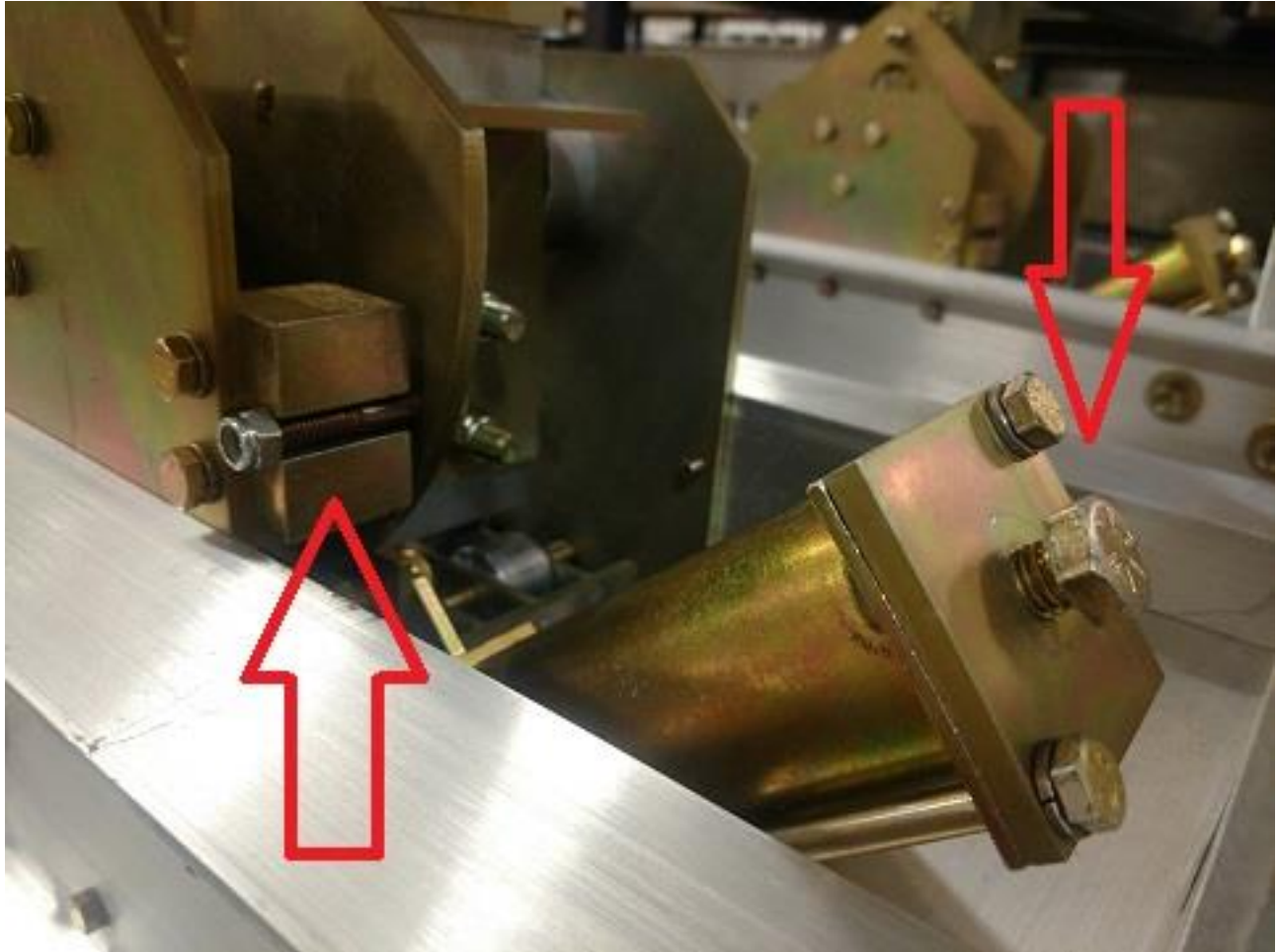
3 ARM SECTIONS -- FULL CLOCKWISE -- FACTORY SETTING

2 ARM SECTIONS -- TURN BOLT OUT 3/4 INCH

1 ARM SECTION -- TURN BOLT OUT 1 1/4 INCH

THESE ARE GENERAL RECOMMENDATIONS, LOCATIONS WITH HIGHER WIND – TURN BOLT IN FOR HIGHER BREAKAWAY.

**UNDER NO CIRCUMSTANCES SHOULD THIS BOLT BE REMOVED.**

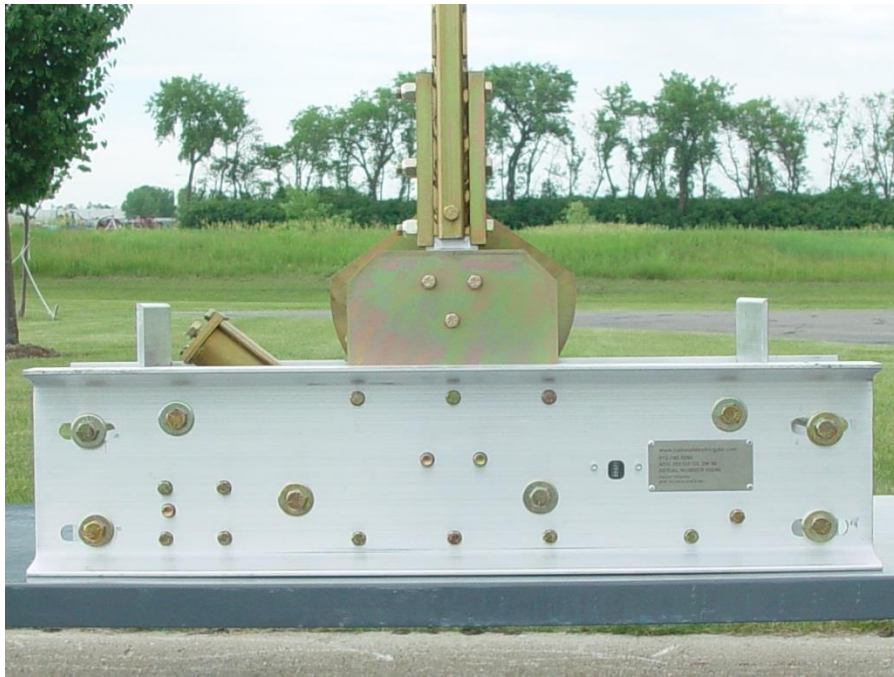


THERE IS A SHEAR BOLT PROVISION FOR CIRCUMSTANCES LIKE A WIND STORM WHERE IT MAY BE DESIRABLE TO PREVENT THE GATE FROM LEAVING CENTER POSITION. THIS PROVIDES VERY HIGH RESISTANCE TO WIND, HOWEVER, IF A VEHICLE WERE TO STRIKE THE GATE THE SHEAR BOLT WILL BREAK AND THE GATE SAVER WILL RETURN TO NORMAL OPERATION.



THERE IS A LOCK BOLT PROVISION AS WELL. PLACING A 1/4" x 3.5" BOLT IN THE HOLE WILL LOCK THE INTERNAL MECHANISM SO THE GATE SAVER CANNOT MOVE OUT OF THE CENTER POSITION. THIS PROVISION IS INTENDED FOR SEVERE STORMS LIKE A HURRICANE WHERE THE WINDS WILL BE MUCH HIGHER THAN TYPICAL AND THE POSSIBILITY OF BEING BLOWN OUT OF THE WIND BRACKET IS HIGH.

**CAUTION: IF A VEHICLE STRIKES THE GATE ARM WHILE THE LOCK BOLT IS IN PLACE DAMAGE WILL BE CERTAIN. THE GATE ARM AND/OR THE MOUNTING STUB OF THE GATE SAVER WILL BE DAMAGED AND WILL NEED TO BE REPLACED.**



ALL 90 DEGREE 2WAY GATE SAVERS ARE UNIQUELY IDENTIFIED BY SERIAL NUMBER. THE ID PLATE IS LOCATED SO IT IS READILY VISIBLE WHEN THE MECH IS UP.